

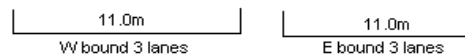
YEAR 2013

CORE STATION 5035

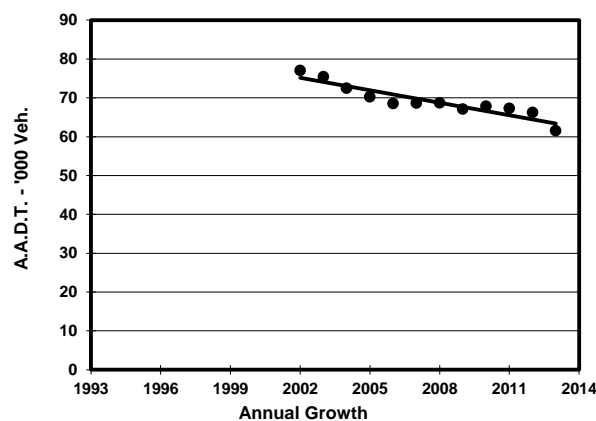
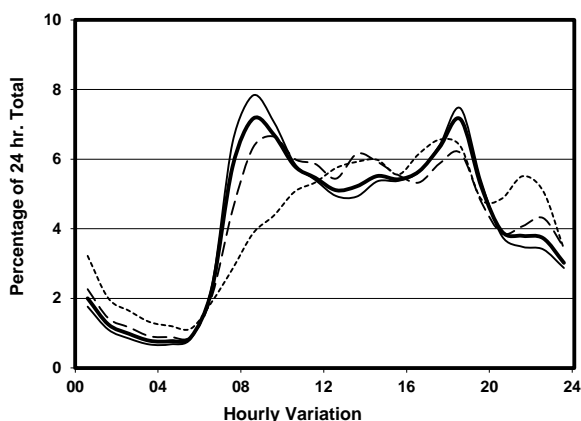
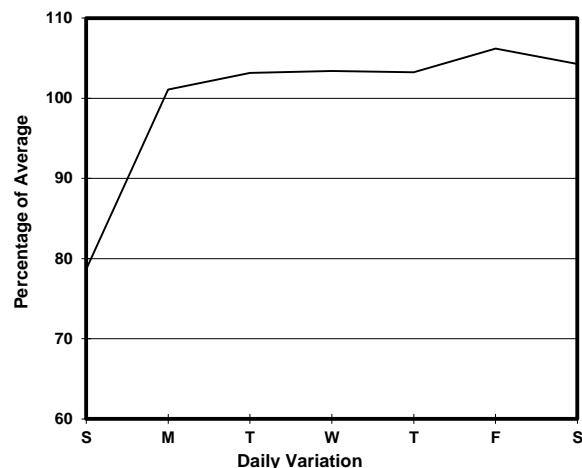
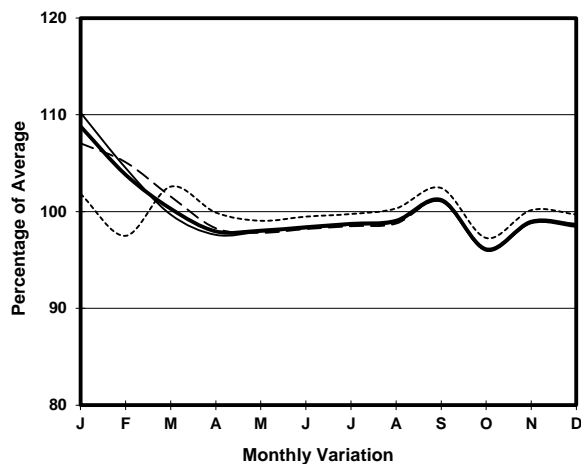
ROAD NETWORK MAJOR

ROAD TYPE EXPRESSWAY

LINK TUEN MUN RD (from CASTLE PEAK RD - TSUEN WAN to TSING LONG HIGHWAY - TING KAU BRIDGE)



1. TRAFFIC FLOW VARIATION AND GROWTH



2. TRAFFIC CHARACTERISTICS (BY DIRECTION)

Parameter	All - Day	Mon. - Fri.	Sat.	Sun.
EAST BOUND				
A.A.D.T.	32160	34070	33860	23480
R 12 / 24 - %	75.4	76.8	74.4	66.6
R 16 / 24 - %	88.5	89.2	87.9	84.5
AM Peak Hour	0800-0900	0800-0900	0900-1000	0900-1000
One-way flow at AM peak hour	2870	3330	2750	1280
T - % (AM)	-	-	-	-
PM Peak Hour	1800-1900	1800-1900	1800-1900	1700-1800
One-way flow at PM peak hour	1950	2070	1990	1470
T - % (PM)	-	-	-	-
Prop.of commercial vehicles - 16 hr.	-	-	-	-
WEST BOUND				
A.A.D.T.	29400	30340	31030	25490
R 12 / 24 - %	66.9	68.3	64.9	61.2
R 16 / 24 - %	87.5	88.4	85.8	83.8
AM Peak Hour	0800-0900	0800-0900	0900-1000	0900-1000
One-way flow at AM peak hour	1540	1720	1560	860
T - % (AM)	-	-	-	-
PM Peak Hour	1800-1900	1800-1900	1800-1900	1700-1800
One-way flow at PM peak hour	2450	2740	2020	1740
T - % (PM)	-	-	-	-
Prop.of commercial vehicles - 16 hr.	-	-	-	-

3. OTHER INFORMATION AND COMMENT